

***The National Convention on the European Union  
The Slovak Republic***



Kristina Mikulova  
Head of Development Cooperation

## Country at a Crossroads

- East or West?
  - “Black Hole in the Heart of Europe”
  - EU and NATO Conditionality
  - Peer Pressure from the Neighbourhood
  - Electoral revolution in 1998
  - Coalition of pro-reform forces
- A decade of reform

## National platform for dialogue

- Political will to forge a national consensus: “What is to be done?”
  - Climbing out of an economic slump
  - Catching up with neighbours en route to the EU
  - Adopting the *acquis communautaire*
  - Joining the OECD
- → **Fast-track twin reform and EU accession process**

# The “What“?



## National Convention on the EU

- Multi-stakeholder approach
  - Public-private chairmanship
  - Government (national/local, private sector, civil society, academia, media, citizenry)
  - Moderated by a leading NGO, SPFA
  - Legislative and policy output
- **Direct channel from citizen to prime minister**

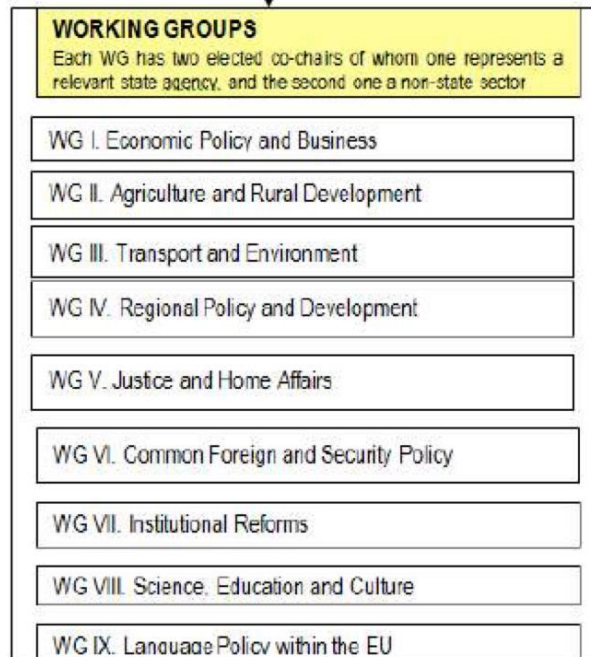
# The “What“?



## THE NATIONAL CONVENTION ON THE EU IN SLOVAKIA

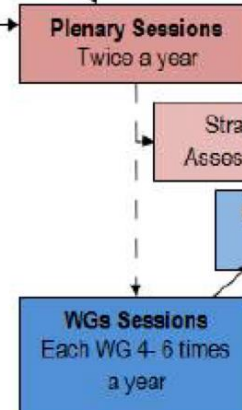
### STRUCTURE

#### Chairmanship (ex officio)



Members

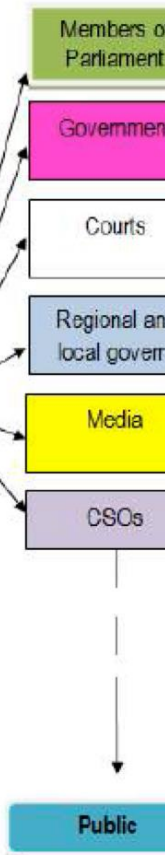
### EVENTS

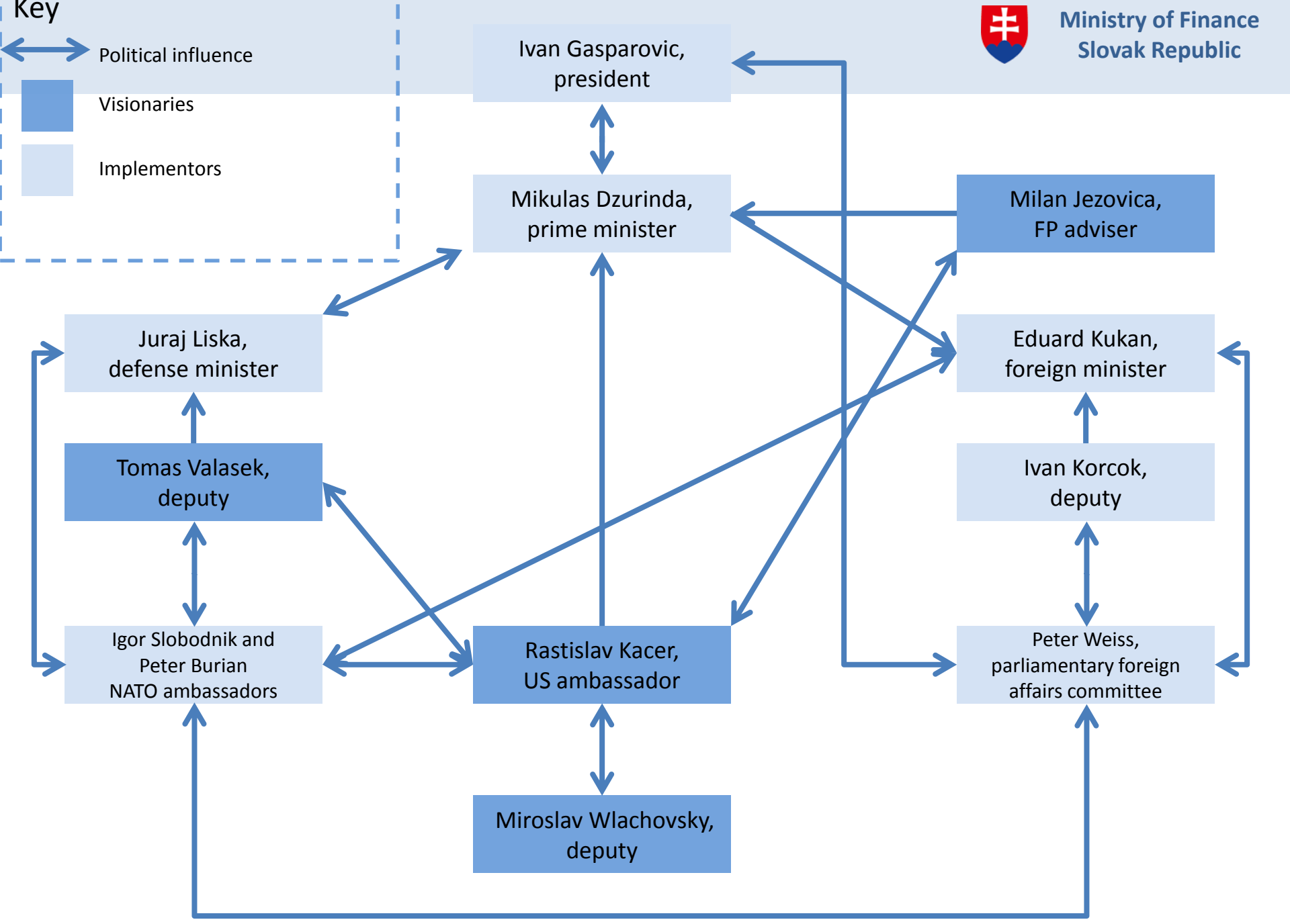
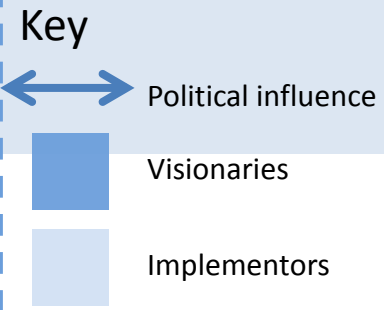


### OUTPUTS



### RECIPIENTS





# “Now what”?



Ministry of Finance  
Slovak Republic

## NARRATIVE

“Return to Europe”  
“Catching Up”  
“From Laggard to Leader”

## RESONANCE

## POLITICAL COMMITMENT

Consensus across political spectrum  
Leadership  
“Taboo topics” in campaigns

## EMPOWERMENT

## KNOWLEDGE MOBILIZATION

Bottom-up approach  
Technical expertise  
Administrative capacity

## “TRANSITION KNOW-HOW”

## ACCOUNTABILITY

Structured dialogue  
Visible results  
Mutual stakeholder monitoring

## TRUST

# So “What“?



## A Way of Doing Things

- **At home:** tailoring PPD model – scaling up and down – to address mezzo- and micro-challenges
- **Abroad:** sharing “grand challenge” PPD model with others, such as Albania, Ukraine, Moldova, Serbia

### Lesson learned: sustainability

- difficult to succeed without high stakes – grand challenges easier to tackle?
- circumstances that empower champions are impossible to replicate
- linkage and leverage: strength of ‘weak ties’